



Product Service

CERTIFICATE

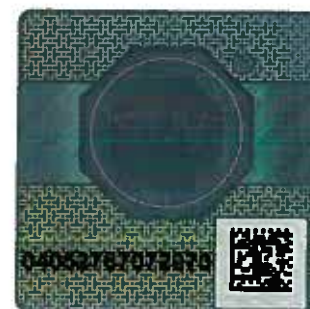
No. Z1 17 08 22430 050

Holder of Certificate: Alu Rehab ASBedriftsvegen 23
4353 Klepp Stasjon
NORWAY**Certification Mark:****Product:****Standard wheelchairs
Manual wheelchair**

The product was tested on a voluntary basis and complies with the essential requirements. The certification mark shown above can be affixed on the product. It is not permitted to alter the certification mark in any way. In addition the certification holder must not transfer the certificate to third parties. See also notes overleaf.

Test report no.: 713096377-1

Valid until: 2022-08-28

Date, 2017-08-29  (Torsten Zimmer)

Page 1 of 2

**CERTIFICATE****No. Z1 17 08 22430 050****Model(s): Netti 4U Base****Parameters:**

total length incl. footrests:	1110 - 1130 mm
width:	530 - 680 mm
height:	1150 mm (without head rest)
seat width:	350, 400, 450 and 500 mm
seat depth:	425, 450, 475 and 500 mm
seat height:	465 - 500 mm (without seat cushion)
backrest height:	500 mm (without seat cushion)
seat plane angle:	-5° - +20°
backrest angle:	92° - +137°
max. user weight:	135 kg
brake system:	drum brake (assistant brake)
back wheels:	
- size	16 x 1 3/4"
- tyres	solid rubber (puncture proof)
- adjustable	Yes
- fixation	Quick release
front wheels:	
- size	Ø 175 x 45 mm
- tyres	solid rubber (puncture proof)
- adjustable	Yes
- fixation	Quick release
frame material:	aluminium
armrest:	depth adjustable, upward swingable and not removable
legrest:	height, angle adjustable and removable
anti tip device:	adjustable

Tested according to: EN 12183:2014**Production Facility(ies):** 57370