

Test Report



CLIENT CONFIDENTIAL

Client Alu Rehab AS

Test Item Netti 4U Base (30 kg)

Test ISO 7176/19 Wheelchair

Millbrook Report No. 12/0494

Millbrook Project No. CR0175-005-001

Millbrook Test No. S12106

Author:

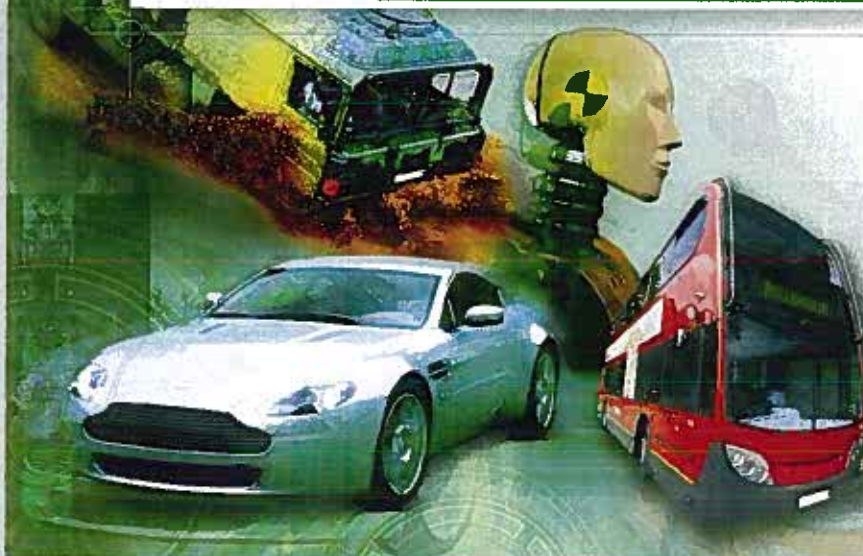
Oliver King
Engineer

Approved:

Kieran Forinton
Principal Engineer

Date:

31st May 2012



Millbrook Proving Ground Ltd
Millbrook, Bedford, MK45 2JQ, UK
Tel: +44 (0)1525 404242
Fax: +44 (0)1525 403420
Email: info@millbrook.co.uk
www.millbrook.co.uk

This test report shall not be reproduced, except in full, without written approval of Millbrook

Test Results

ISO 7176/19

Section 5.2 - Dynamic Performance Requirements

Test No: S12106 Client: Alu Rehab AS Wheelchair: NETTI 4U BASE Occupant: Hybrid II 50th % (75 kg)		RESULTS
5.1	During the Test	
a)	Horizontal ATD and wheelchair excursion limits as per limits shown in Table 3:-	
	Was the horizontal movement of the test wheelchair P- Point (X_{ss}) less than 200 mm. (± 5 mm)	PASS 90 mm
	Was the horizontal movement of the dummy Knee (X_{knee}) less than 375 mm. (± 5 mm)	PASS 342 mm
	Was the horizontal movement of the Dummy (X_{head}) less than 650 mm. (± 5 mm)	PASS 417 mm
b)	Was the ratio $X_{knee}/X_{ss} > 1.1:1$	PASS 3.81 : 1
c)	Not conducted	
	Did the batteries of powered wheelchairs, or their surrogate parts:-	
	I. move outside of the wheelchair footprint	N/A
	II. move into the wheelchair user's space	N/A
5.2	Post Test	
a)	Did the wheelchair remain upright on the test platform and did the ATD remain in a seated posture in the test wheelchair with a torso angle $> 45^\circ$	PASS
b)	Did the wheelchair securement points show visible signs of material failure	PASS
c)	Did any components of a mass greater than 100g become detached from the wheelchair	PASS
d)	Did any occupant contactable components fragment or separate with an edge of less than 2mm	PASS
e)	Did any primary load carrying components of the wheelchair show any visible signs of failure	PASS
f)	Did any 'tilt in space' locking mechanisms show signs of failure	PASS
g)	Was the ATD released from the wheelchair without the use of tools	PASS
h)	Was the wheelchair released from the restraint system without the use of tools	PASS
i)	Was the average decrease of H-Point height relative to the wheelchair platform less than 20% of the pre-test height	PASS
The wheelchair satisfied the Dynamic Test requirements of ISO/NP 7176/19 of 7th July 2008		PASS