



Product Service

# CERTIFICATE

No. Z1 16 09 22430 045

**Holder of Certificate:** **Alu Rehab AS**  
Bedriftsvegen 23  
4353 Klepp Stasjon  
NORWAY



**Certification Mark:**

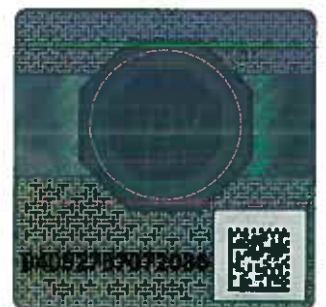


**Product:** **Standard wheelchairs**  
**Manual wheelchair**

The product was tested on a voluntary basis and complies with the essential requirements. The certification mark shown above can be affixed on the product. It is not permitted to alter the certification mark in any way. In addition the certification holder must not transfer the certificate to third parties. See also notes overleaf.

**Test report no.:** 713081970

**Valid until:** 2021-09-14



**Date,** 2016-09-15 (Torsten Zimmer)

Page 1 of 2



Product Service

## CERTIFICATE

No. Z1 16 09 22430 045

**Model(s):** **Manual wheelchair type: Netti 4U Comfort CE**

**Parameters:**

|                    |   |
|--------------------|---|
| total length       |   |
| incl. footrests:   | 1130 mm   |
| total length       |   |
| without footrests: | 930 mm  |
| width:             | 530 - 680 mm  |
| height:            | 1030 mm (without headrest)                                    |
| seat width:        | 400, 450 and 500 mm   |
| seat depth:        | 425 - 500 mm  |
| seat height:       | 465 - 500 mm  |
| backrest height:   | 480 mm  |
| seat plane angle:  | - 5° - +20°   |
| backrest angle:    | 92° - 137°  |
| max. user weight:  | 135 kg  |
| brake system:      | knee lever brake (user brake)<br>drum brake (assistant brake) |
| back wheels        |   |
| -size:             | 24 x 1" and 24 x 1 3/8"                                       |
| -tyres:            | solid rubber (puncture proof)                                 |
| -adjustable:       | yes   |
| -fixation:         | quick release   |
| front wheels       |   |
| -size:             | ø 175 x 33 mm   |
| -tyres:            | solid rubber (puncture proof)                                 |
| -adjustable:       | yes   |
| -fixation:         | quick release   |
| frame material:    | aluminium   |
| armrest:           | height adjustable and removable                               |
| legrest:           | height adjustable, angle adjustable<br>and removable          |
| anti tip device:   | adjustable  |

**Tested according to:** DIN EN 12183:2014

**Production Facility(ies):** 57370

Page 2 of 2